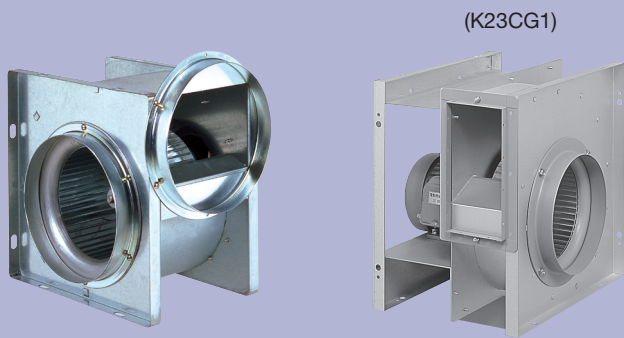


Mini Sirocco Fan

Air Moving Equipment



Single Phase

- K10CG1
- K12CG1
- K14CG1
- K16CG1
- K17CG1
- K19CG1
- K21CG1
- K23CG1

Long-life induction motor with thermo cut-off

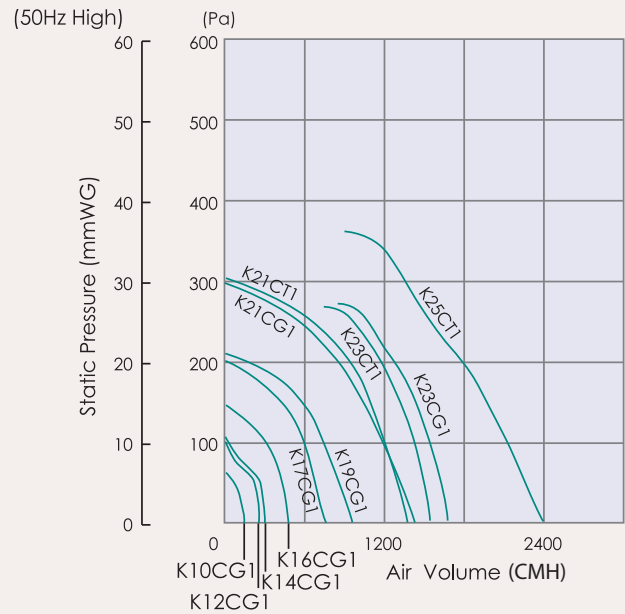
Highly efficient Sirocco fan employed for powerful airflow

Outlet direction is adjustable to vertical or horizontal position

Compact size

Two speed selectable
(K16CG1, K17CG1, K19CG1, K21CG1)

Performance Data (220V 50Hz) Unit : mm



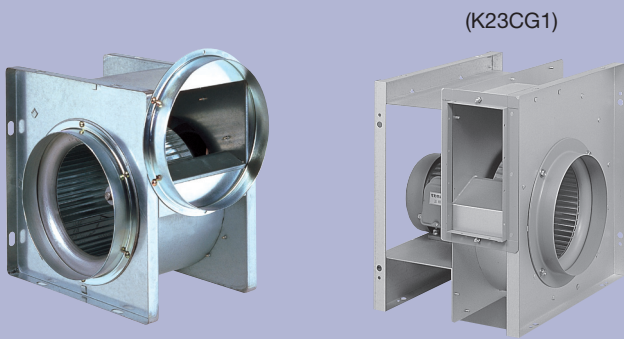
Specifications

Note: The value in Specification tables are representative of characteristic value at 220V, 50Hz.

	Model No.	Hz	Consumption [W]	R.P.M [min ⁻¹]	Air Volume		Noise [dB(A)]			Weight [Kg]	Section Duct Size [mm]	Discharge Duct Size [mm]	Impeller Diameter [cm]
					[CMH]	[CFM]	Casing Side	Suction Side	Discharge Side				
Single Phase	K10CG1	-	11	980	144	85	32	38	38	3.1	ø 100	ø 100	10
	K12CG1	-	21	760	258	152	34	39	39	3.6	ø 150	ø 150	12
	K14CG1	-	30	930	308	181	39	44.5	44.5	3.8	ø 150	ø 150	12
	K16CG1	Hi	49	1,080	495	291	43.5	50	50	5.3	ø 150	ø 150	15
		Lo	41	875	365	215	38	44.5	44.5				
	K17CG1	Hi	87	920	763	443	46	51	51	8.8	ø 200	ø 200	18
		Lo	74	815	640	377	42.5	47	47				
	K19CG1	Hi	117	1,110	947	557	50.5	55.5	55.5	9.4	ø 200	ø 200	18
		Lo	109	1,030	821	483	49	54	54				
	K21CG1	Hi	240	1,325	1,420	836	57	61	61	15	ø 200	ø 200	20
Lo		220	1,230	1,260	742	56	59.5	59.5					
K23CG1	-	450	1,440	1,654	973	59	67	68.5	25	ø 250	130 x 260	23	

Mini Sirocco Fan

Air Moving Equipment



Single Phase

- K10CG1
- K12CG1
- K14CG1
- K16CG1
- K17CG1
- K19CG1
- K21CG1
- K23CG1

Long-life induction motor with thermo cut-off

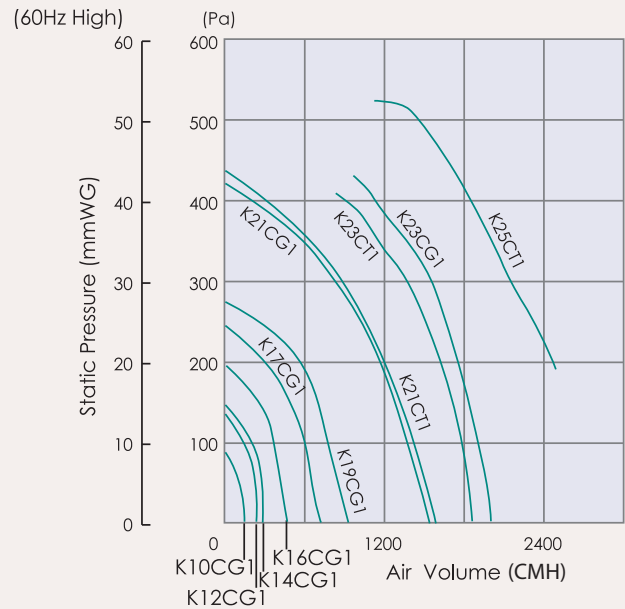
Highly efficient Sirocco fan employed for powerful airflow

Outlet direction is adjustable to vertical or horizontal position

Compact size

Two speed selectable
(K16CG1, K17CG1, K19CG1, K21CG1)

Performance Data (220V 60Hz) Unit : mm



Specifications

Note: The value in Specification tables are representative of characteristic value at 220V, 60Hz.

	Model No.	Hz	Consumption [W]	R.P.M [min ⁻¹]	Air Volume		Noise [dB(A)]			Weight [Kg]	Section Duct Size [mm]	Discharge Duct Size [mm]	Impeller Diameter [cm]	
					[CMH]	[CFM]	Casing Side	Suction Side	Discharge Side					
Single Phase	K10CG1	60	-	13	970	143	84	32	38	38	3.1	ø 100	ø 100	10
	K12CG1		-	22	725	242	142	32	38	38	3.6	ø 150	ø 150	12
	K14CG1		-	40	870	284	167	36	41.5	41.5	3.8	ø 150	ø 150	12
	K16CG1		Hi	59	1,060	470	277	42.5	49	49	5.3	ø 150	ø 150	15
			Lo	40	805	335	197	36	42.5	42.5				
	K17CG1		Hi	95	850	722	425	44.5	49	49	8.8	ø 200	ø 200	18
			Lo	79	730	593	349	40	45	45				
	K19CG1		Hi	143	1,100	931	548	50	55	55	9.4	ø 200	ø 200	18
			Lo	127	985	791	466	48	53	53				
	K21CG1		Hi	340	1,430	1,540	906	59	63	63	15	ø 200	ø 200	20
Lo		300	1,180	1,230	724	54	58.5	58.5						
K23CG1	-	755	1,650	1,984	1,168	63	70.5	72.5	25	ø 250	130 x 260	23		